

CITY OF POWAY  
PLANS FOR THE CONSTRUCTION OF  
2022-2023 CDBG ADA PROJECT  
COMMUNITY PARK RESTROOM AND PATHWAY

GENERAL NOTES:

- ALL WORK TO CONFORM TO THE MOST CURRENT EDITION OF THE "STANDARD SPECIFICATIONS FOR PUBLIC WORKS CONSTRUCTION" WITH SUPPLEMENTS (A.P.W.A. SPECIFICATIONS), THE SAN DIEGO AREA REGIONAL STANDARD DRAWINGS, AND THE CITY OF POWAY AMENDMENTS TO EACH.
- ALL OPERATIONS CONDUCTED ON THE PREMISES, INCLUDING THE WARMING UP, REPAIR, ARRIVAL, DEPARTURE, OR RUNNING OF TRUCKS, EARTHMOVING EQUIPMENT, CONSTRUCTION EQUIPMENT, AND ANY OTHER ASSOCIATED EQUIPMENT SHALL BE LIMITED TO THE PERIOD BETWEEN 7:00 AM AND 4:30 PM MONDAY THROUGH THURSDAY AND 7:30 AM AND 4:00 PM ON ALTERNATING FRIDAYS, EXCLUDING HOLIDAYS. THERE SHALL BE NO WORK ON THE ALTERNATING FRIDAY ON WHICH CITY HALL IS CLOSED. LANE CLOSURES WILL ONLY BE ALLOWED PER THE APPROVED TRAFFIC CONTROL PLAN. NO GRADING AND EARTHMOVING OPERATIONS SHALL BE CONDUCTED ON THE PREMISES ON CLOSED FRIDAYS, SATURDAYS, SUNDAYS, OR CITY OF POWAY HOLIDAYS WITHOUT PRIOR APPROVAL BY THE CITY ENGINEER, EXCEPT FOR EMERGENCIES INVOLVING IMMEDIATE HAZARD TO PERSONS OR PROPERTY. IN THE EVENT OF EITHER A REQUESTED OR EMERGENCY DEVIATION, INSPECTION SERVICE FEES WILL BE CHARGED AGAINST THE CONTRACTOR. THE SERVICE FEES WILL BE CALCULATED AT OVERTIME RATES INCLUDING BENEFITS, OVERHEAD, AND TRAVEL TIME. THE SERVICE FEES WILL BE DEDUCTED FROM ANY AMOUNTS DUE THE CONTRACTOR.
- THE CONTRACTOR SHALL NOTIFY THE CITY OF POWAY DEVELOPMENT SERVICES DEPARTMENT 48 HOURS PRIOR TO STARTING WORK SO THAT INSPECTION SERVICES MAY BE PROVIDED. INSPECTION REQUESTS CAN BE MADE BY CALLING (858) 668-4668.
- THE CONTRACTOR SHALL TAKE ALL PRECAUTIONARY MEASURES TO PROTECT EXISTING IMPROVEMENTS AND THE CITY WILL ENFORCE SECTION 7-9 OF THE STANDARD SPECIFICATIONS.
- ALL EXISTING IMPROVEMENTS INCLUDING A.C. BERM, A.C. OR P.C.C. PAVING, WHICH ARE BEING JOINED OR MATCHED IN CONNECTION WITH THIS PROJECT SHALL BE JOINED OR MATCHED IN A MANNER SATISFACTORY TO THE CITY ENGINEER, INCLUDING NECESSARY SAWCUTTING, REMOVAL, REPLACEMENT AND CAPPING.
- ALL WORK SHALL BE ACCOMPLISHED IN CONFORMANCE WITH APPLICABLE CITY OF POWAY ORDINANCES.
- THE CONTRACTOR SHALL NOTIFY UNDERGROUND SERVICE ALERT BEFORE START OF CONSTRUCTION 1 (800) 422-4133.
- THE CONTRACTOR IS RESPONSIBLE FOR POTHOLING ALL UTILITIES PER SECTION 5-1 OF THE STANDARD SPECIFICATIONS, PRIOR TO START OF CONSTRUCTION TO VERIFY ALL ELEVATIONS OF UNDERGROUND UTILITIES.
- THE CONTRACTOR SHALL BE REQUIRED TO OBTAIN A CONSTRUCTION WATER METER FROM THE CITY OF POWAY AND SHALL ALSO BE REQUIRED TO PAY FOR ALL WATER USED.
- THE CONTRACTOR SHALL GIVE THE CITY INSPECTOR 48 HOUR ADVANCE NOTICE WHEN SOIL/MATERIAL TESTING IS NEEDED.

LOW IMPACT DESIGN REQUIREMENTS:

I CERTIFY THAT THESE PLANS HAVE ADDRESSED AND/OR IMPLEMENTED LOW IMPACT DESIGN IN ACCORDANCE WITH THE CITY OF POWAY BMP DESIGN MANUAL.

ENGINEER:

NAME RCE# DATE

DECLARATION OF RESPONSIBLE CHARGE

I HEREBY DECLARE THAT I AM THE ENGINEER OF WORK FOR THIS PROJECT, THAT I HAVE EXERCISED RESPONSIBLE CHARGE OVER THE DESIGN OF THE PROJECT AS DEFINED IN SECTION 6703 OF THE BUSINESS AND PROFESSIONS CODE, AND THAT THE DESIGN IS CONSISTENT WITH CURRENT STANDARDS.

I UNDERSTAND THAT THE CHECK OF PROJECT DRAWINGS AND SPECIFICATIONS BY THE CITY OF POWAY IS CONFINED TO A REVIEW ONLY AND DOES NOT RELIEVE ME, AS ENGINEER OF WORK OF MY RESPONSIBILITIES FOR PROJECT DESIGN.

NAME RCE# DATE

EXISTING UTILITIES:

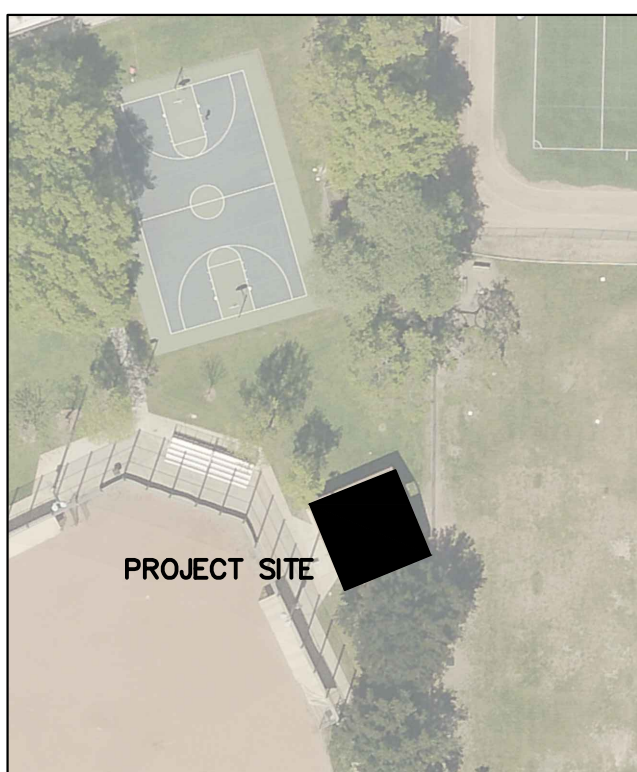
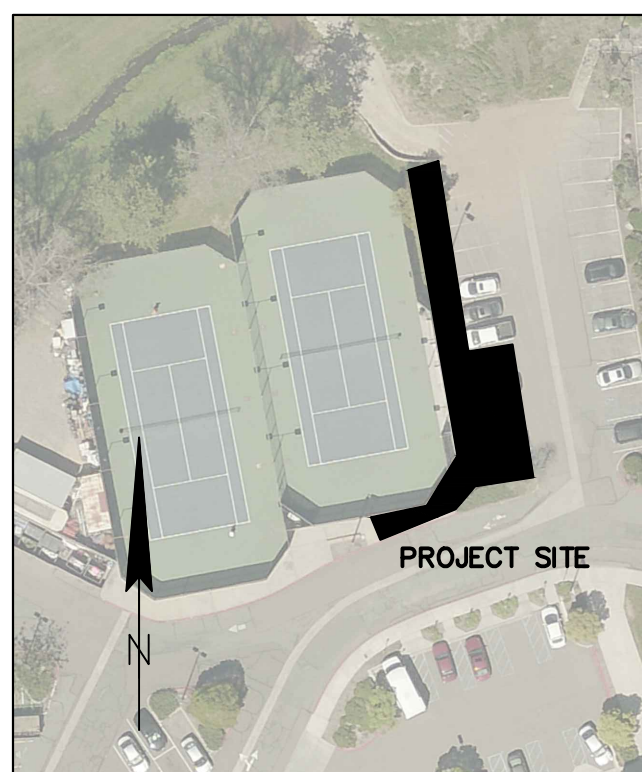
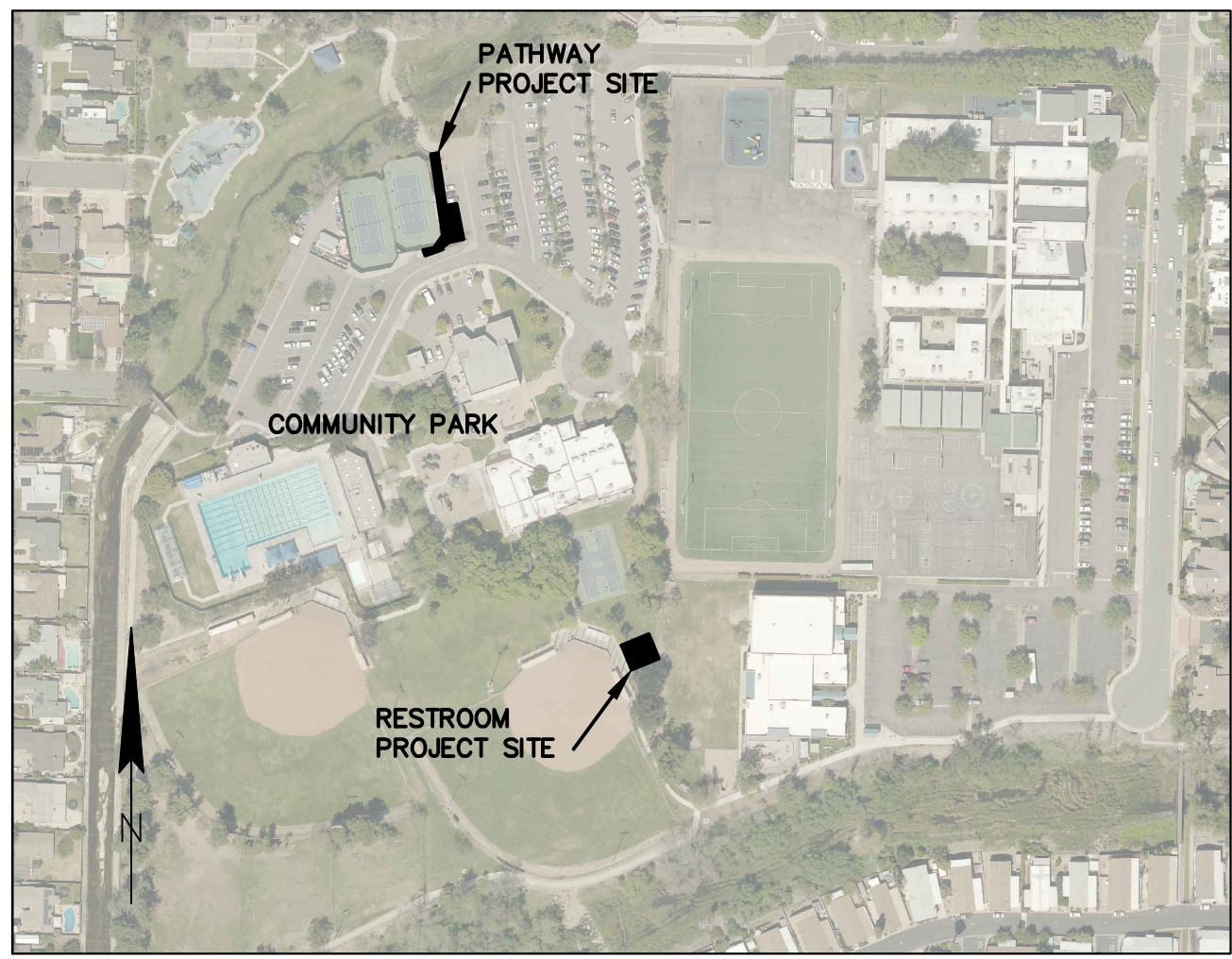
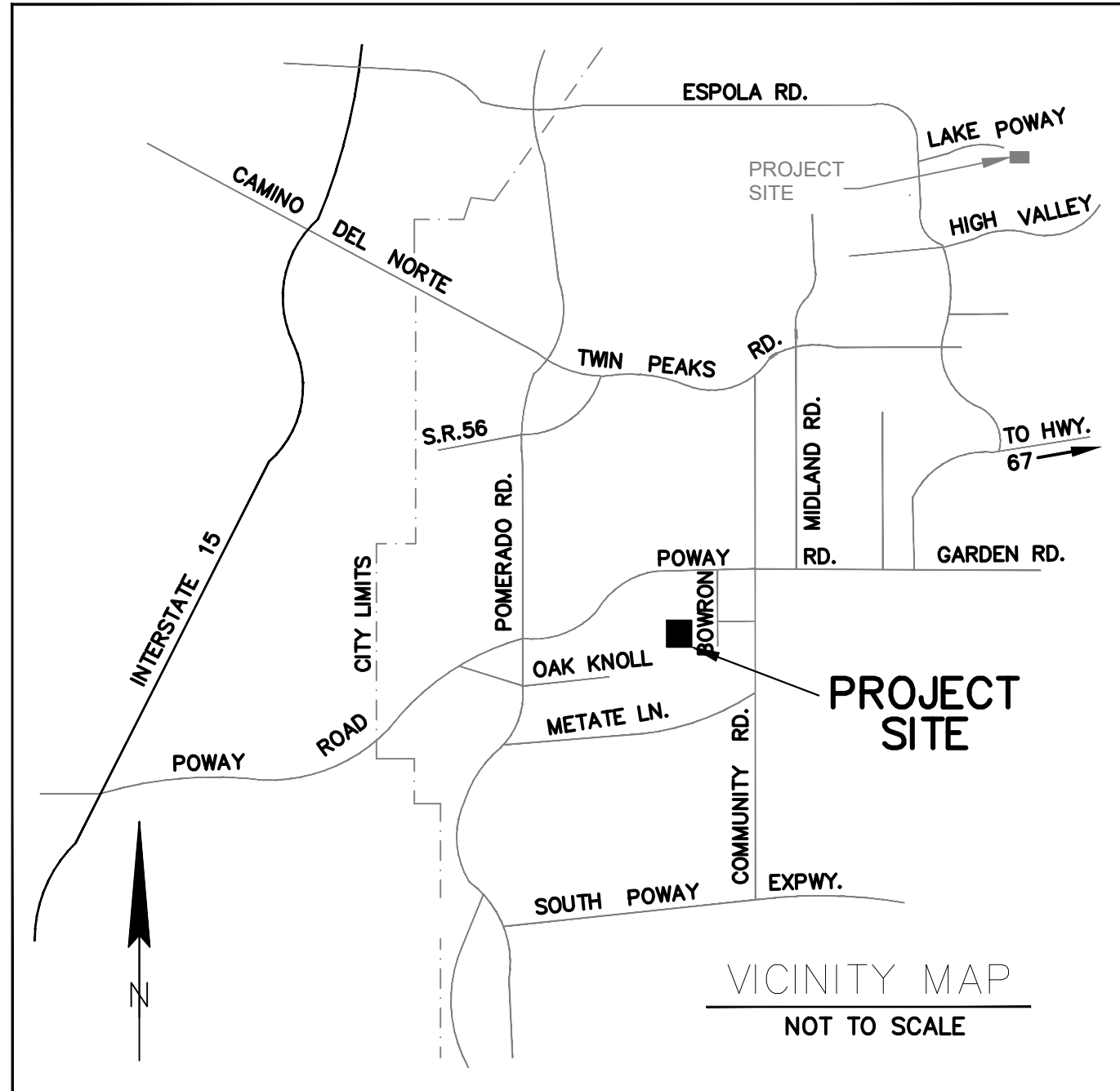
INFORMATION ON THE DRAWINGS RELATING TO EXISTING UTILITY LINES AND SERVICES IS FROM THE BEST SOURCES PRESENTLY AVAILABLE. ALL SUCH INFORMATION IS FURNISHED ONLY FOR INFORMATION AND IS NOT GUARANTEED. THE CONTRACTOR SHALL EXCAVATE TEST PITS AS REQUIRED TO DETERMINE EXACT LOCATIONS OF EXISTING UTILITIES.

THE CONTRACTOR IS ADVISED OF THE EXISTENCE OF THE UTILITY NOTIFICATION SERVICE PROVIDED BY UNDERGROUND SERVICE ALERT (USA). USA MEMBER UTILITIES WILL PROVIDE THE CONTRACTOR WITH THE PRECISE LOCATIONS OF THEIR SUBSTRUCTURES IN THE CONSTRUCTION AREA WHEN THE CONTRACTOR GIVES AT LEAST 48 HOURS NOTICE TO UNDERGROUND SERVICE ALERT BY CALLING 1 (800) 422-4133.

THE CONTRACTOR SHALL COORDINATE ALL UTILITY ADJUSTMENTS, RELOCATIONS, AND REMOVALS WITH THE UTILITY COMPANIES.

EROSION CONTROL NOTES:

- EROSION CONTROL DEVICES SHALL BE INSTALLED AS SHOWN ON THE APPROVED EROSION CONTROL PLAN.
- FAILURE TO HAVE EROSION CONTROL MEASURES INSTALLED AT THE REQUIRED TIMES WILL RESULT IN A STOP WORK ORDER AND MAY RESULT IN THE CITY INSTALLING APPROPRIATE EROSION CONTROL. PAYMENT FOR ANY SUCH WORK WILL BE CHARGED TO THE CONTRACTOR.
- ALL MATERIALS FOR EROSION CONTROL INSTALLATION SHALL BE ON THE JOB SITE AT ALL TIMES. EROSION CONTROL MEASURES SHALL BE IN PLACE AT THE END OF EACH WORKING DAY WHENEVER THERE IS A 50% OR GREATER CHANCE OF RAIN WITHIN 48 HOURS. EROSION PROTECTION SHALL INCLUDE EFFECTIVE PLANTING OR COVERAGE OF ALL DISTURBED AREAS UNLESS OTHERWISE APPROVED BY THE CITY ENGINEER.
- EROSION PROTECTION SHALL INCLUDE EFFECTIVE PLANTING OF ALL SLOPES UNLESS OTHERWISE APPROVED BY THE CITY ENGINEER. PLANTING OF THE SLOPES SHALL BE DONE AS SOON AS PRACTICABLE, AND PRIOR TO ROUGH GRADE APPROVAL. IF THIS IS NOT ACCOMPLISHED, THE SLOPE SHALL BE TREATED WITH PUNCHED BROADCAST ON THE SOIL SURFACE AT FOUR THOUSAND POUNDS PER ACRE AND HELD WITH A TACKIFIER, FIBER OR NET, OR AN EQUAL SYSTEM APPROVED BY THE CITY ENGINEER OR CITY LANDSCAPE ARCHITECT. PLANTING SHALL BE INSTALLED, FULLY GERMINATED, AND EFFECTIVELY COVER THE REQUIRED SLOPES PRIOR TO FINISHED GRADE APPROVAL.
- EARTH BERMS OR LINED BROWS SHALL BE USED TO PREVENT RUNOFF DRAINAGE FROM FLOWING OVER THE TOP OF SLOPES. A SIX-INCH-HIGH BY TWELVE-INCH-WIDE BERM (COMPACTED TO 90%) SHALL BE CONSTRUCTED ALONG THE TOPS OF SLOPES.
- ALL RIP RAP ENERGY DISSIPATORS SHALL BE PER D-40 (TYPE I WITH CONCRETE SILL, OR TYPE II WITHOUT CONCRETE SILL). ROCK SHALL BE PER SECTION 200-1.6 OF THE STANDARD SPECIFICATIONS FOR PUBLIC WORKS CONSTRUCTION.
- TEMPORARY EROSION CONTROL DEVICES SHOWN ON THE EROSION CONTROL PLAN WHICH INTERFERE WITH THE WORK SHALL BE RELOCATED OR MODIFIED AS THE WORK PROGRESSES, WITH APPROVAL FROM THE CITY ENGINEER.
- ALL LOOSE SOIL AND DEBRIS GENERATED AS A RESULT OF ANY WORK ON THE PROJECT SITE SHALL BE REMOVED FROM THE STREET AREAS DAILY.
- VELOCITY CHECK DAMS SHALL BE INSTALLED ACROSS THE OUTLETS OF ALL LOTS DRAINING INTO THE STREET, ALL UNPAVED GRADED CHANNELS, AND ALL UNPAVED STREET AREAS.
- STAND-BY CREWS SHALL BE ALERTED BY THE CONTRACTOR FOR EMERGENCY WORK DURING RAINSTORMS.
- WATER, SEWER, STORM DRAIN, AND UTILITY TRENCHES SHALL BE PROTECTED TO PREVENT SILTATION, WHICH MAY CAUSE DAMAGE OR BECOME A NUISANCE ON PUBLIC RIGHT-OF-WAY, PUBLIC DRAINAGE COURSES, OR DOWNSTREAM PRIVATE PROPERTIES.
- GRAVEL BAG SILT BASINS OR TRAPS SHALL BE INSTALLED AT EVERY STORM DRAIN INLET TO PREVENT SEDIMENT FROM ENTERING THE STORM DRAIN SYSTEM, IN THE EVENT SILT DOES ENTER THE EXISTING STORM DRAIN SYSTEM, REMOVAL OF THE SILT FROM THE SYSTEM WILL BE AT THE CONTRACTOR'S EXPENSE.
- ANY PROPOSED CHANGES AND ALTERNATE EROSION CONTROL MEASURES MUST BE APPROVED IN ADVANCE BY THE CITY ENGINEER.
- EROSION CONTROL DEVICES ARE TO BE MAINTAINED AND REPAIRED DAILY.
- SILTATION RETENTION DEVICES ARE TO BE CLEANED OF SILT AFTER EACH RAIN EVENT AND/OR WHEN RETAINED SILT HEIGHT IS 75% OF TOTAL AVAILABLE CAPACITY OF THE RETENTION DEVICE.
- CONTRACTOR SHALL BE RESPONSIBLE FOR ALL FINES ASSESSED BY ANY OUTSIDE AGENCIES.



INDEX OF SHEETS:

SHEET NO	TITLE
1	TITLE SHEET
2	RESTROOM PLANS
3	RESTROOM DETAILS
4	PATHWAY PLANS
5	PATHWAY DETAILS

CODES:

TYPE OF CONSTRUCTION: WOOD FRAMED  
SPRINKLERS: NO  
OCCUPANT LOAD (SECOND FLOOR): 10

THIS PROJECT SHALL COMPLY WITH THE 2019 CALIFORNIA BUILDING CODE, WHICH ADOPTS  
2019 CALIFORNIA GREEN BUILDING CODE (CALGREEN)  
2019 CALIFORNIA ELECTRICAL CODE (CEC)  
2019 CALIFORNIA MECHANICAL CODE (CMC)  
2019 CALIFORNIA PLUMBING CODE (CPC)  
2019 CALIFORNIA FIRE CODE (CFC)  
2019 CALIFORNIA BUILDING ENERGY EFFICIENCY STANDARDS (CBEES) SECTION R106.1

DECLARATION OF RESPONSIBLE CHARGE

I HEREBY DECLARE THAT I AM THE ENGINEER OF WORK FOR THIS PROJECT, THAT I HAVE EXERCISED RESPONSIBLE CHARGE OVER THE DESIGN OF THE PROJECT AS DEFINED IN SECTION 6703 OF THE BUSINESS AND PROFESSIONS CODE, AND THAT THE DESIGN IS CONSISTENT WITH CURRENT STANDARDS.

I UNDERSTAND THAT THE CHECK OF PROJECT DRAWINGS AND SPECIFICATIONS BY THE CITY OF POWAY IS CONFINED TO A REVIEW ONLY AND DOES NOT RELIEVE ME, AS ENGINEER OF WORK OF MY RESPONSIBILITIES FOR PROJECT DESIGN.

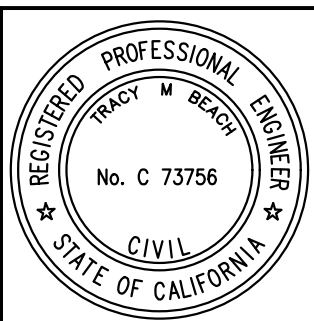
TRACY M BEACH RCE#73756 DATE

ABBREVIATIONS

AC	ASPHALT CONCRETE
C&G	CURB AND GUTTER
CB	CATCH BASIN
CBM	CONSTRUCTION BENCH MARK
CONC	CONCRETE
EG	EXISTING GROUND
EXIST	EXISTING
FG	FINISH GRADE
FS	FINISH SURFACE
FSE	FINISH SURFACE ELEVATION
FL	FLOW LINE
GB	GRADE BREAK
L	LENGTH
LF	LINEAR FEET
LT	LEFT
MID	MIDDLE
MH	MANHOLE
OC	ON CENTER
PCC	PORTLAND CEMENT CONCRETE
PC	POINT OF CURVATURE
PT	POINT OF TANGENCY
PP	POWER POLE
R	RADIUS
RT	RIGHT
ROW	RIGHT OF WAY
RW	RECYCLED WATER
SDRS	SAN DIEGO COUNTY REGIONAL STANDARD DRAWINGS
SDMH	STORM DRAIN MANHOLE
SW	SIDEWALK
TOC	TOP OF CURB
TYP	TYPICAL
WM	WATER METER
W/	WITH

CIP NUMBER: PK022

Sheet 1	CITY OF POWAY Department of Development Services	5 Sheets
IMPROVEMENT PLANS FOR 2022-2023 CDBG ADA COMMUNITY PARK RESTROOM AND PATHWAY TITLE SHEET		
California Coordinate Index		290-1755
City Engineer TRACY M BEACH RCE 73756 DATE 05/24/2023		
Project Manager JEFF BEERS DATE 05/15/2023		



RECORD PLAN

TRACY BEACH  
P.E. #73756

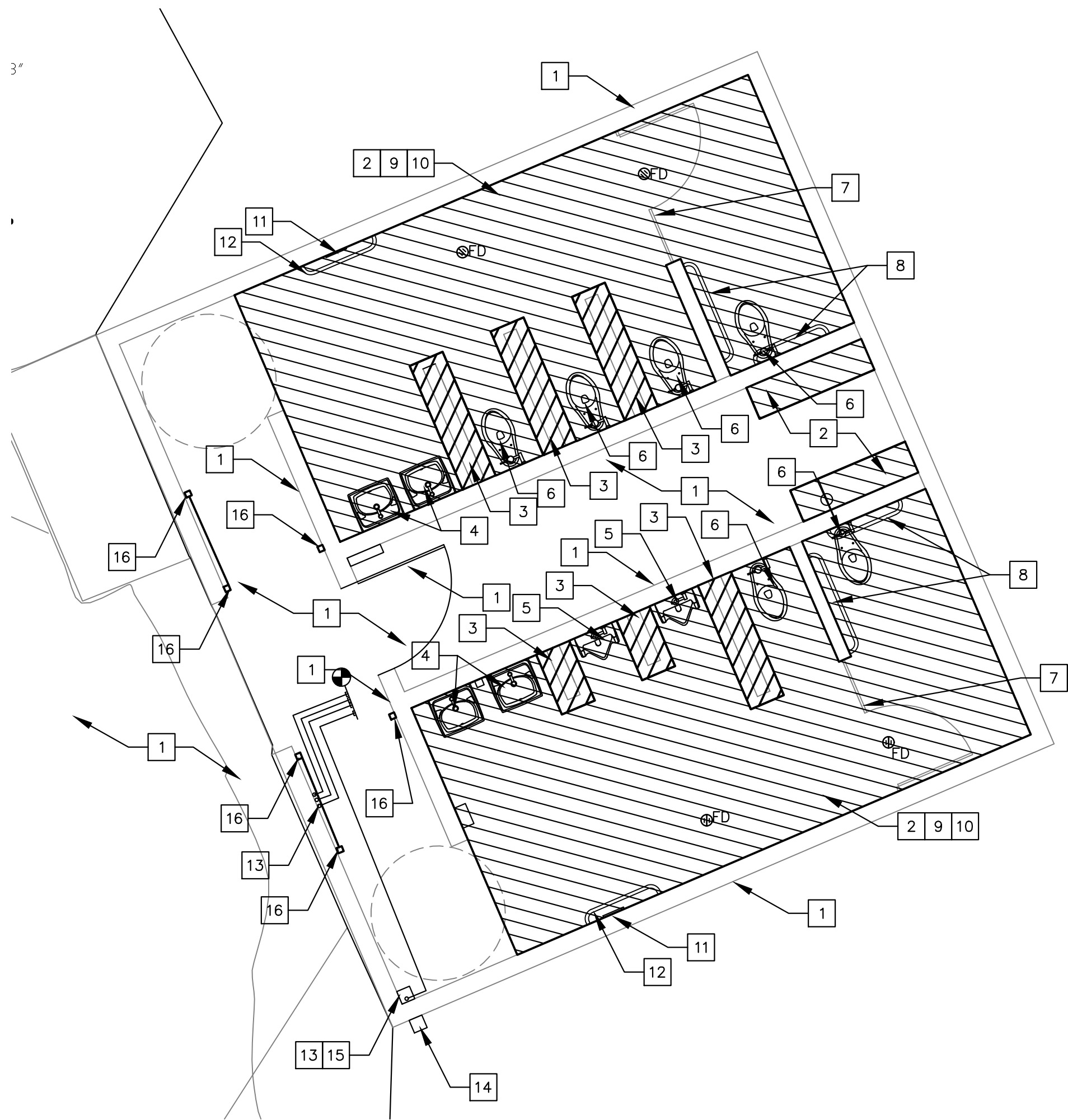
CITY APPROVED CHANGES

No.	Description	Approved By	Approved Date

BENCH MARK

DESCRIPTION: N/A
LOCATION:
RECORDED FROM:
ELEVATION: DATUM:



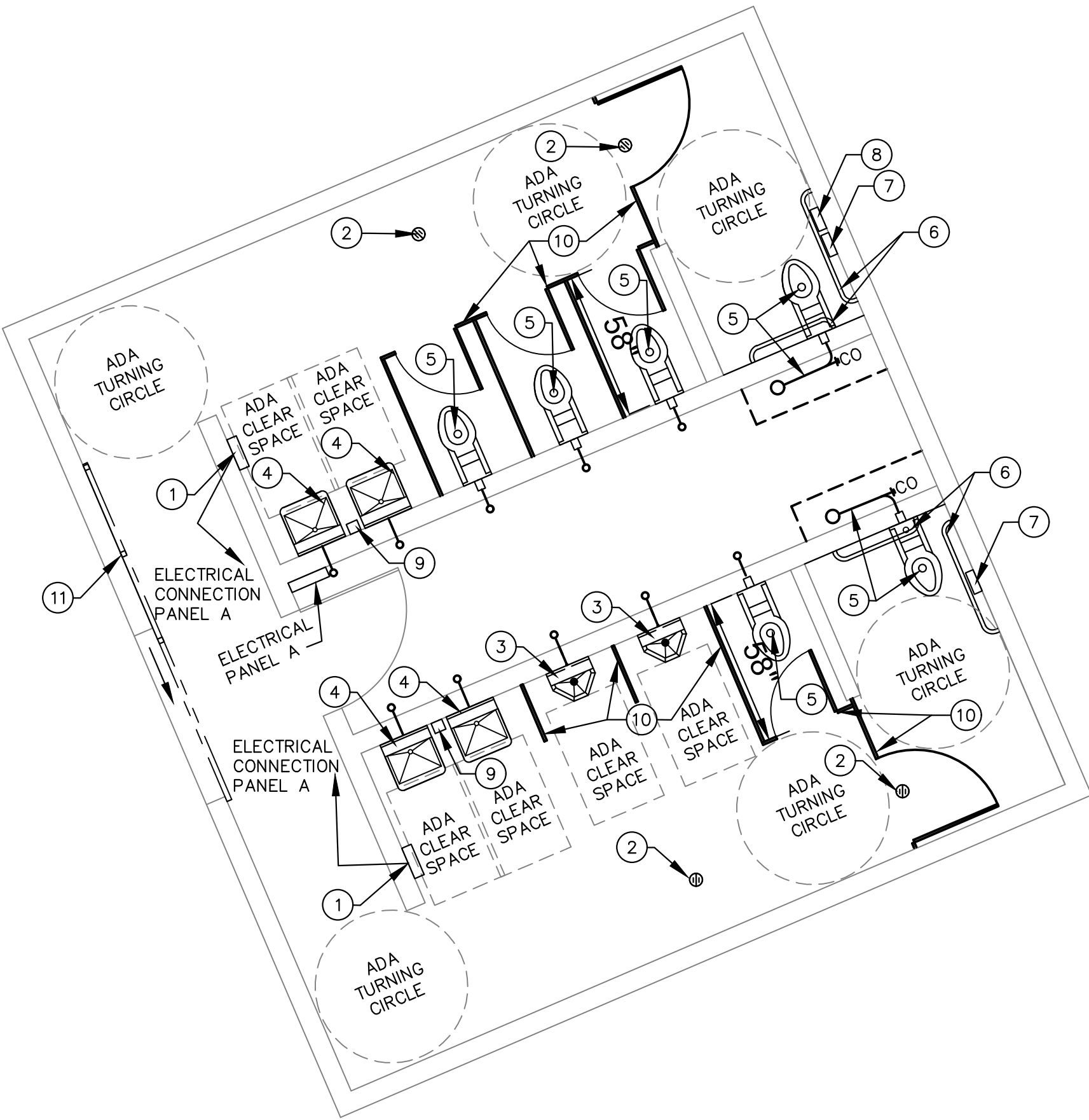


RESTROOM DEMOLITION PLAN

SCALE 1/4" = 1'-0"

DEMOLITION NOTES

- 1 PROTECT IN PLACE THE EXISTING BUILDING, EXISTING PCC FLOORING, DOORS AND HARDWARE. ANY FIXTURE NOT NOTED TO BE DEMOLISHED AND EXTERIOR PATHWAYS AND SOD AROUND OR LEADING TO THE BUILDING.
- 2 SAWCUT EXISTING PCC FLOOR AS CLOSE TO CMU WALL AS POSSIBLE, REMOVE PCC FROM SAWCUT TO CMU WALL. PROTECT EXISTING FLOOR DRAINS AND SEWER LINES BELOW SLAB.
- 3 DEMOLISH AND DISPOSE OF EXISTING CMU STEM WALLS, FOOTINGS AND PCC SLAB AROUND STEM WALLS.
- 4 DEMOLISH AND DISPOSE OF EXISTING LAVATORY, WASTE PIPING THROUGH THE WALL AND CONNECTION TO WASTE DROP IN PIPE CHASE. DEMOLISH AND DISPOSE OF EXISTING FLEXIBLE WATER LINES AND ANGLE STOP VALVES FROM WALL TO LAVATORY.
- 5 DEMOLISH AND DISPOSE OF EXISTING URINAL AND FLUSH VALVE.
- 6 DEMOLISH AND DISPOSE OF EXISTING TOILET AND FLUSH VALVE.
- 7 DEMOLISH AND DISPOSE OF EXISTING PARTITIONS AND MOUNTING HARDWARE.
- 8 DEMOLISH AND DISPOSE OF EXISTING EXISTING GRAB BARS AND TOILET PAPER DISPENSERS.
- 9 REMOVE ALL CAULKING, MOUNTING BOLTS, UN-NEEDED OLD HARDWARE AND PREPARE SPACE FOR INSTALLATION OF MEW FIXTURES AND FINISHES.
- 10 REMOVE ALL MISC. HARDWARE FROM WALL. PATCH ALL HOLES IN CMU WITH COLORED GROUT TO MATCH CMU.
- 11 DEMOLISH AND DISPOSE OF WALL MOUNTED SIGN. PATCH HOLES WITH COLORED GROUT.
- 12 DEMOLISH AND DISPOSE OF WALL MOUNTED GRAB BAR PATCH HOLES WITH COLORED GROUT.
- 13 DEMOLISH AND DISPOSE OF WALL MOUNTED CONDUIT TO ABOVE ROOF AND CAP CONDUIT PATCH HOLES WITH COLORED GROUT.
- 14 DEMOLISH AND DISPOSE OF WALL MOUNTED JUNCTION BOX, PATCH HOLES WITH COLORED GROUT.
- 15 DEMOLISH AND DISPOSE OF WALL MOUNTED PLYWOOD CONDUIT CHASE AND PATCH HOLES WITH COLORED GROUT.
- 16 DEMOLISH AND DISPOSE OF GATE AND GATE HARDWARE AND PATCH HOLES WITH COLORED GROUT.

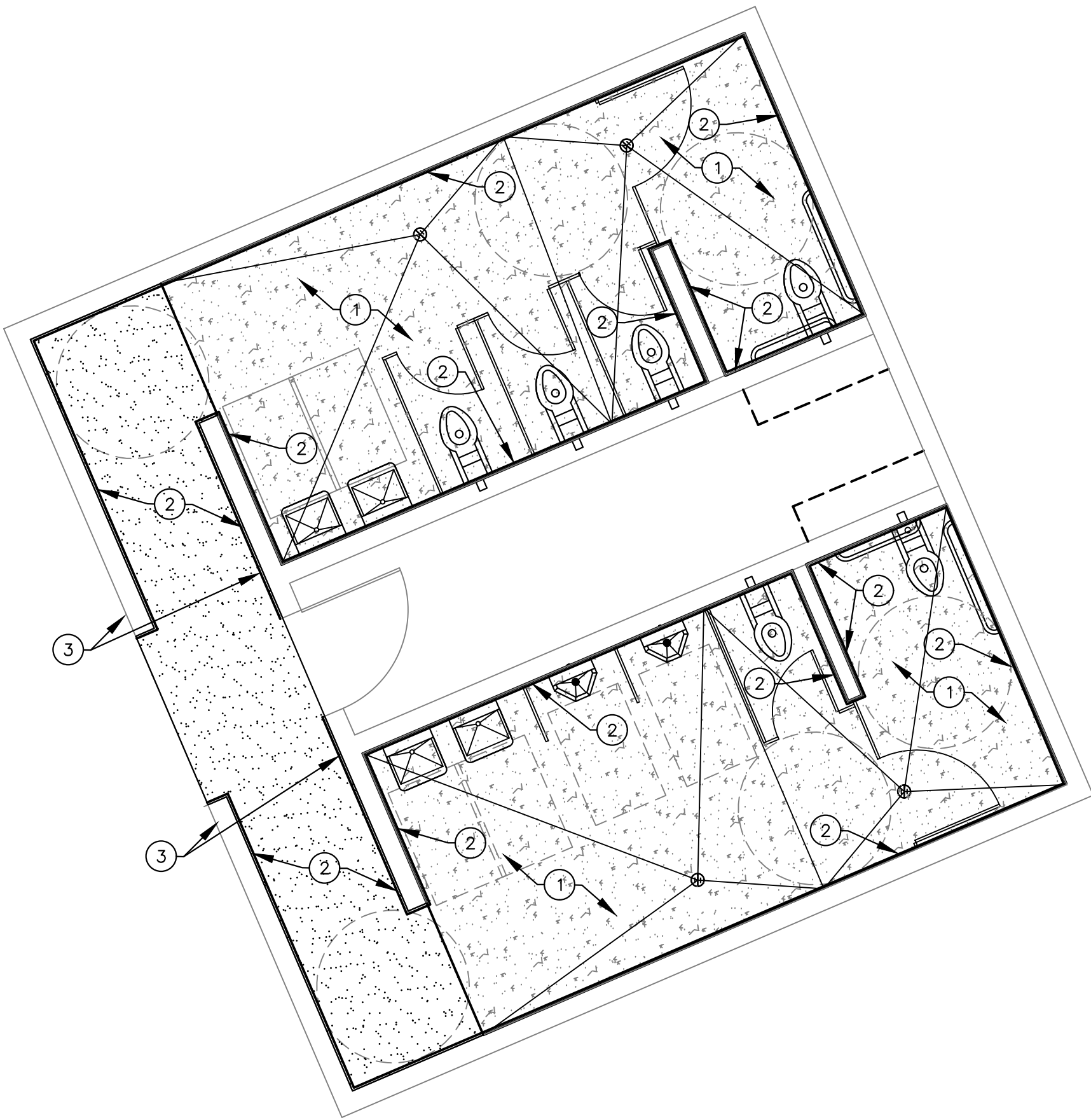


RESTROOM NEW FIXTURE PLAN

SCALE 1/4" = 1'-0"

NEW WORK NOTES

- 1 NEW WALL MOUNTED HAND DRYER, AS SUPPLIED BY PINNACLE DRYER CORPORATION, SURFACE MOUNTED, TOUCHLESS MODEL NUMBER P3-12S. CONTRACTOR TO INSTALL NEW EMT CONDUIT, CONDUCTORS AND CONNECTORS FROM ELECTRICAL PANEL "A" TO DRYER FOLLOWING ALONG WALLS. NO FREE AIR CONDUIT INSTALLATION WILL BE ALLOWED. CONTRACTOR TO INSTALL NEW 15 AMP BREAKER IN SPARE BREAKER IN PANEL "A" FOR EACH DRYER.
- 2 NEW 6" BRASS ROUND FLOOR DRAIN WITH MUD RING.
- 3 NEW STAINLESS STEEL SURFACE MOUNTED URINAL AS SUPPLIED BY METCRAFT INDUSTRIES, MODEL NUMBER 7620. CONTRACTOR TO PROVIDE NEW FLUSH VALVES, NIPPLES AND PIPING THROUGH THE CMU WALL AND CONNECT TO THE EXISTING WATER PIPING IN PIPE CHASE. CONTRACTOR TO MODIFY AS NEEDED PIPING CONNECTION TO WASTE VENT PIPING.
- 4 NEW STAINLESS STEEL HAND WASH SINK AS SUPPLIED BY METCRAFT INDUSTRIES, MODEL NUMBER 6942. CONTRACTOR TO PROVIDE ALL NEW PLUMBING, STAINLESS STEEL BRAIDED WATER SERVICE, NEW ANGLE STOP VALVE AND WASTE LINES THROUGH CMU WALL TO EXISTING WASTE PIPING IN THE PIPE CHASE. CONTRACTOR TO MODIFY AS NEEDED PIPING CONNECTION TO WASTE VENT PIPING. HAND WASH SINK TO HAVE NEW DECK MOUNTED FAUCET AS SUPPLIED BY CHICAGO FAUCET, MODEL NUMBER 844 SERIES DUAL SUPPLY AND DUAL MOUNTING BOLTS.
- NEW 18"x30" POLISHED STAINLESS STEEL SURFACE MOUNTED MIRROR AS SUPPLIED BY BOBRICK WASHROOM EQUIPMENT, INC., MODEL NUMBER B-1556. CONTRACTOR SHALL USE ALL NEW STAINLESS STEEL MOUNTING CONTRACTOR TO APPLY TO MIRROR PROTECTIVE FILM BY NU VUE, WINDOW FILMS INC. (619) 994-2882 MODEL NUMBER - ANTI-GRAFFITI FILM.
- 5 NEW STAINLESS STEEL TOILET FIXTURE AS SUPPLIED BY METCRAFT INDUSTRIES, MODEL NUMBER 4680. CONTRACTOR TO PROVIDE NEW WATER SERVICE AND FLUSH VALVE, NIPPLES AND CONNECTION TO TOILE AND WASTE PIPING TO EXISTING SEWER IN PIPE CHASE. CONTRACTOR TO MODIFY AS NEEDED PIPING CONNECTION TO WASTE VENT PIPING.
- 6 CONTRACTOR TO INSTALL NEW ADA COMPLIANT STAINLESS STEEL GRAB BARS.
- 7 NEW STAINLESS STEEL SURFACE MOUNTED TOILET PAPER DISPENSER AS SUPPLIED BY BOBRICK WASHROOM EQUIPMENT, INC., MODEL NUMBER B-2888. CONTRACTOR SHALL USE ALL NEW STAINLESS STEEL MOUNTING TO CMU WALL.
- 8 NEW STAINLESS STEEL SURFACE MOUNTED SANITARY NAPKIN DISPOSAL CONTAINER AS SUPPLIED BY BOBRICK WASHROOM EQUIPMENT INC., MODEL NUMBER B-270. CONTRACTOR TO USE ALL NEW STAINLESS STEEL MOUNTING TO CMU WALL.
- 9 NEW SOAP DISPENSER AS SUPPLIED BY GOJO INDUSTRIES, INC., MODEL NUMBER TFX. CONTRACTOR TO USE ALL NEW STAINLESS STEEL MOUNTING TO CMU WALL.
- 10 NEW HDPE RESTROOM PARTITIONS AS SUPPLIED BY SCRANTON PRODUCTS INC. SEE TECHNICAL SPECIFICATIONS. PARTITION COLOR SHALL BE PAISLEY WITH ORANGE PEAL TEXTURE. CONTRACTOR SHALL USE ALL NEW STAINLESS STEEL MOUNTING TO CMU WALL. PARTITIONS FOR THE NON ADA TOILETS ARE TO BE CUT ON THE WALL MOUNTED END TO SHORTEN THE DEPTH OF THE STALL NECESSARY TO ALLOW FOR THE 60" DIAMETER ADA TURN AROUND AREA IN THE CORRIDOR TO THE ADA TOILET STALL.
- 11 CONTRACTOR TO PROVIDE AND INSTALL NEW HORIZONTAL ROLLING WIRE MESH SECURITY GATE. SAFE-T-FENCE WELDED-WIRE MACHINE GUARD DOOR: 84 IN X 84 IN MODEL NUMBER SAF-SC7082-SL, GRAINGER NUMBER 19H252. PROVIDE WITH EXTRA LENGTH OF TOP RAIL FOR FULL EXTENSION.



RESTROOM NEW CONCRETE AND FINISHES PLAN

SCALE 1/4" = 1'-0"

NEW WORK NOTES

- 1 NEW PCC RESTROOM FLOOR. FLOOR TO BE STEEL TROWEL FINISHED WITH A MAXIMUM SLOPE TO THE DRAINS OF 1.8% IN ANY DIRECTION. CONSTRUCT FLOOR WITH 4X4 WELDED WIRE MESH.
- 2 APPLY URETHANE COATING TO FLOOR AND WALLS TO 7'-0" ABOVE FINISHED FLOOR. PREP EXISTING CONCRETE FLOOR AND CMU WALLS AS DIRECTED BY COATING MANUFACTURER PRIOR TO APPLICATION. FLOOR COLOR = GRAY WALL COLOR = TAN
- 3 CONTRACTOR TO SUPPLY AND MOUNT NEW ADA SIGNAGE PER BUILDING CODE AT THE EXTERIOR OF ENTRANCE AND AT THE INTERIOR OF THE HALLWAY ENTRANCE TO EACH RESTROOM SIDE.



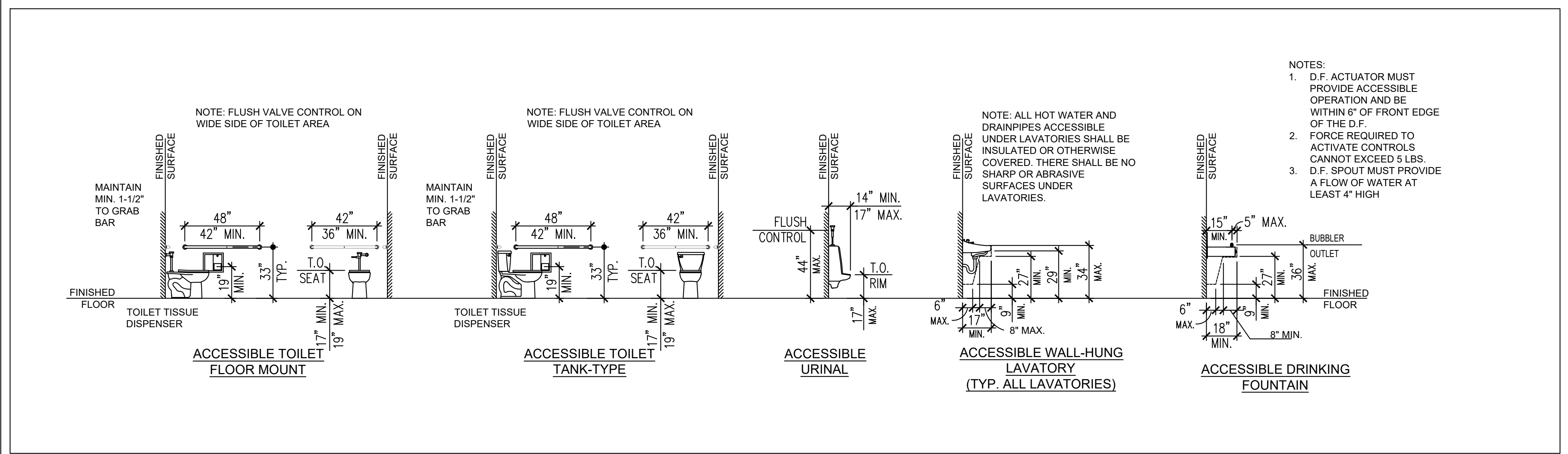
RECORD PLAN

TRACY BEACH  
P.E. #73756

CITY APPROVED CHANGES				BENCH MARK	
No.	Description	Approved By	Approved Date	DESCRIPTION:	

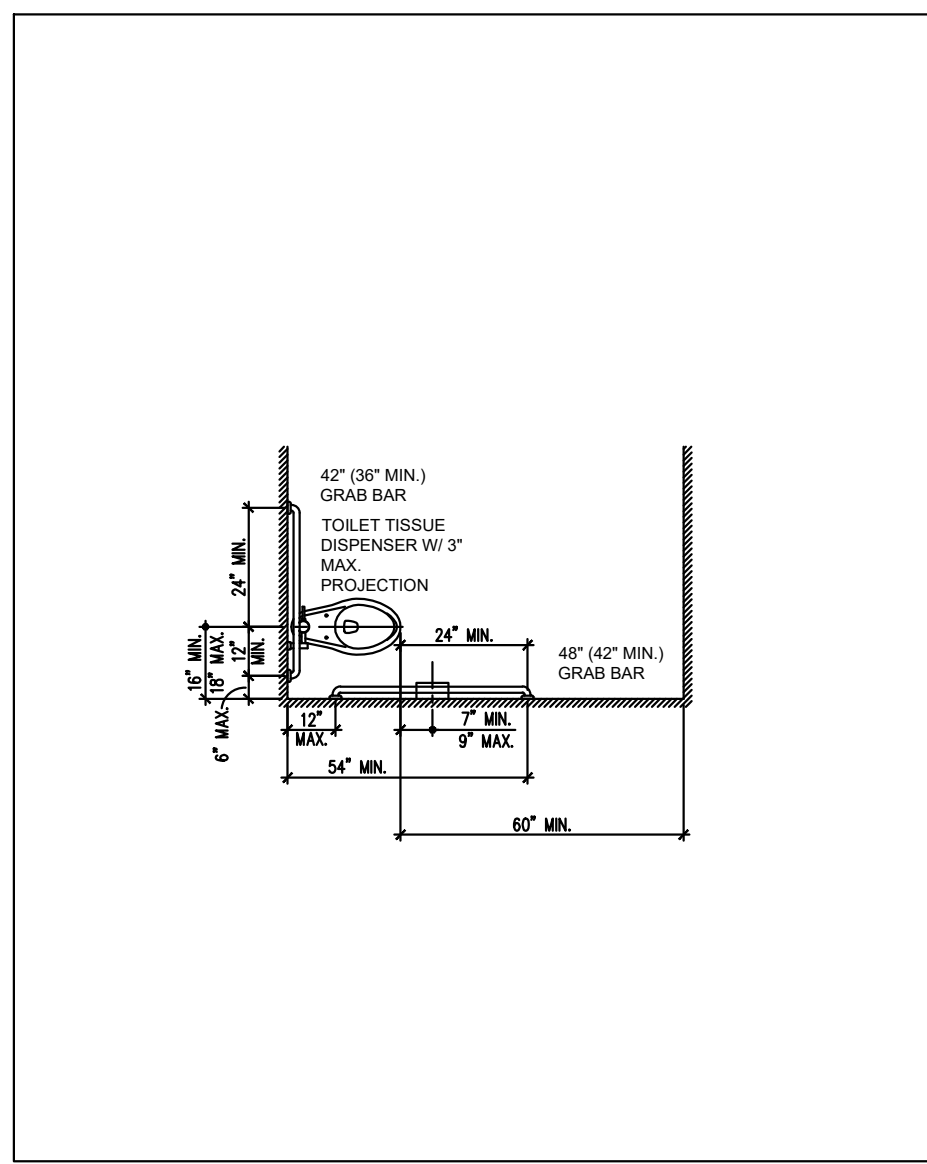
CIP NUMBER: <b>PK022</b>		
Sheet <b>2</b>	<b>CITY OF POWAY</b> Department of Development Services	<b>5</b> Sheets
<b>IMPROVEMENT PLANS FOR 2022-2023 CDBG ADA COMMUNITY PARK RESTROOM AND PATHWAY RESTROOM PLAN</b>		
California Coordinate Index 290-1755		
City Engineer <i>Tracy M. Beach</i>	05/24/2023	
TRACY M BEACH	RCE 73756	DATE
Project Manager <i>Jeff Beers</i>	05/15/2023	
JEFF BEERS		DATE





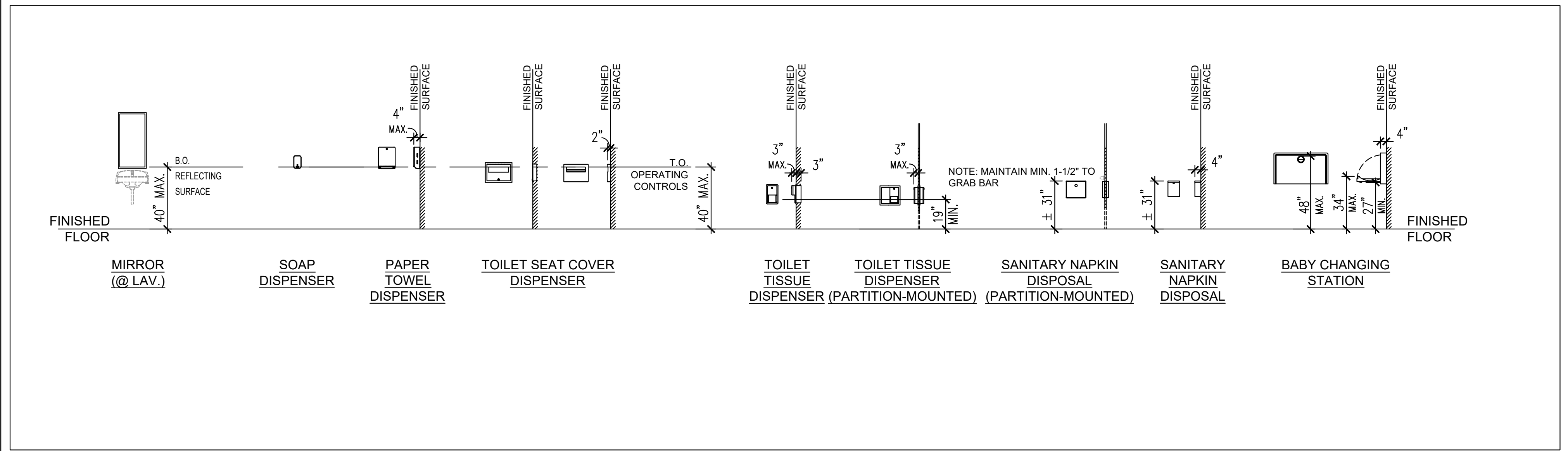
ACCESSIBLE PLUMBING FIXTURES MOUNTING HEIGHTS – ADULT USE

1



ACCESSIBLE TOILET STALL

2



ACCESSIBLE TOILET ACCESSORIES MOUNTING HEIGHTS – ADULT USE

3



**RECORD PLAN**

TRACY BEACH  
P.E. #73756

DATE \_\_\_\_\_

CITY APPROVED CHANGES				BENCH MARK
No.	Description	Approved By	Approved Date	DESCRIPTION:

CIP NUMBER: **PK022**

Sheet <b>3</b>	<b>CITY OF POWAY</b> Department of Development Services	<b>5</b> Sheets
-------------------	--	--------------------

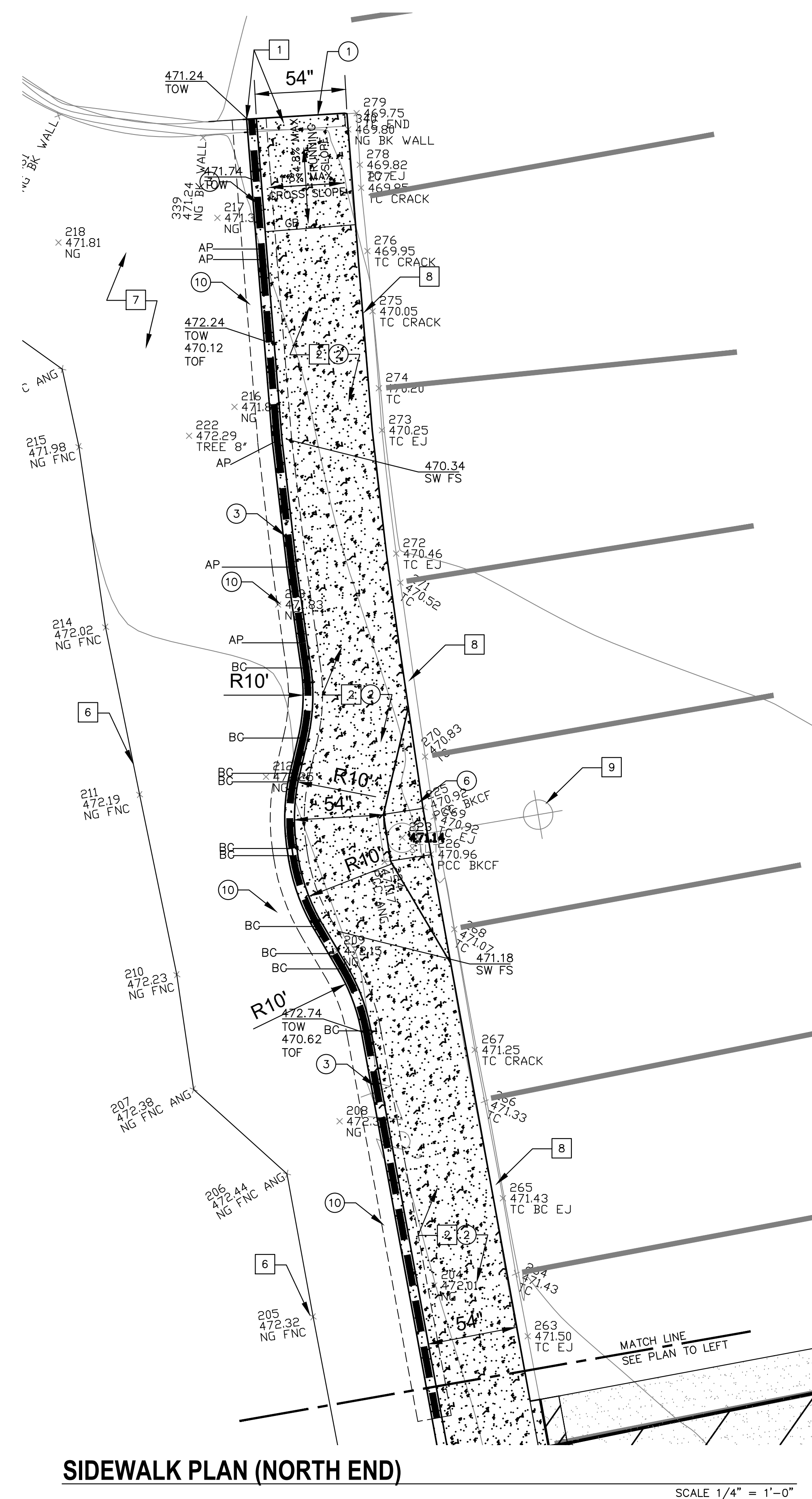
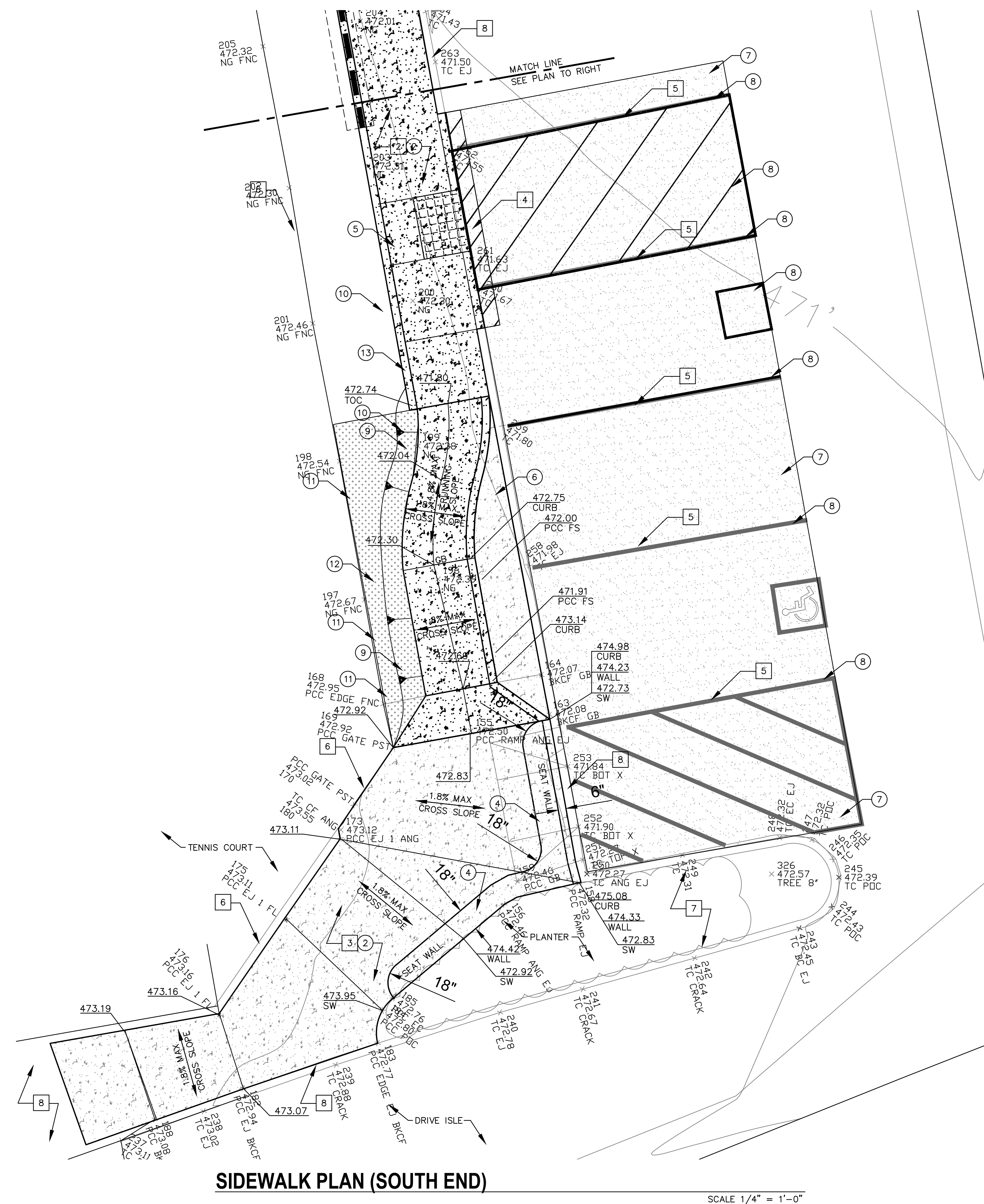
**IMPROVEMENT PLANS FOR  
2022–2023 CDBG ADA  
COMMUNITY PARK RESTROOM AND PATHWAY  
RESTROOM DETAILS**

California Coordinate Index 290–1755

City Engineer *TRM* 05/24/2023  
TRACY M BEACH RCE 73756 DATE

Project Manager *JB* 05/15/2023  
JEFF BEERS DATE





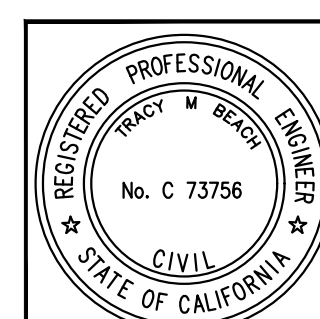


- ## DEMOLITION NOTES
- 1 DEMOLISH AND DISPOSE OF EXISTING CMU WALL AND FOOTING. SAWCUT CMU THAT EXTENDS PAST THE CUT LINE.
  - 2 CLEAR AND GRUB AND REMOVE ALL SUB GRADE, SOD, IRRIGATION (CAPPING ALL IRRIGATION LATERALS AND RE--ROUTE IRRIGATION MAIN LINES, PROTECT IN PLACE ALL CONTROL WIRES), TREE ROOTS, TO MAKE READY FOR NEW IMPROVEMENTS.
  - 3 DEMOLISH AND DISPOSE OF EXISTING PCC SIDEWALK AND CURB.
  - 4 DEMILISH AND DISPOSE OF EXISTING 12" WIDE ASPHALT CONCRETE SLOT PATCH FOR THE CONSTRUCTION OF NEW PEDESTRIAN RAMP.
  - 5 POWER WASH OFF PARKING LOT STRIPING THAT IS IN CONFLICT WITH NEW STRIPING OR IS TO BE COVERED UP BY SEAL COAT.
  - 6 PROTECT IN PLACE TENNIS COURT, COURT FENCING AND GATES.
  - 7 PROTECT IN PLACE ALL VEGETATION IN PLANTERS.
  - 8 PROTECT IN PLACE ALL EXISTING PCC SIDEWALK AND CURB.
  - 9 PROTECT IN PLACE EXISTING PARK LIGHTING STANDARDS.

- ## NEW WORK NOTES
- ① END OF NEW PCC SIDEWALK TO MEET FLUSH WITH EXISTING PCC PANEL.
  - ② NEW 4" THICK PCC SIDEWALK PER SDRSD G-7, NATURAL COLOR. PLACE NEW SAND BED BETWEEN TOP OF WALL FOOTING AND BOTTOM OF NEW SIDEWALK. INSTALL NEW EXPANSION FELT BETWEEN SIDEWALK AND TENNIS COURT STRUCTURES.
  - ③ NEW 6"x6"x16" MISSION COLORED SLUMP BLOCK RETAINING WALL PER SDRSD C-5 WITH MISSION COLORED MORTAR CAP AND MORTAR. SET BLOCK CAP FOR "SKATE STOPS" 64" O.C. AND MORTAR CAP BETWEEN BLOCK CAP.
  - WALL TO CONFORM TO SDRSD 7 & 8. INSTALL BACKFILL AND WALL DRAIN AS NOTED. DAYLIGHT WALL DRAIN AT NORTH END OF WALL BY CORE DRILLING THROUGH EXISTING CMU WALL.
  - ④ NEW SEAT WALL 18"x18" WITH #4 REBAR HOOPS @ 18" AND 4-#4 REBAR RUNNING LENGTH OF SEAT WALL. INSTALL SKATE STOPS AT 36" O.C. LENGTH OF SEAT WALL. 1 1/2" RADIUS FRONT EDGE OF SEAT WALL AND 1/2" RADIUS ON BACK EDGE. WALL SHALL NOT BE PLACED MONOLITHIC WITH SIDEWALK. INSTALL EXPANSION FELT BETWEEN SEAT WALL AND SIDEWALK.
  - ⑤ CONSTRUCT NEW PEDESTRIAN RAMP PER SDRSD G-29 TYPE C. BACKFILL SLOP PATCH WITH CLASS II 1/2" PG 64-10 HOT MIX ASPHALT. INSTALL 36"x48" TRUNCATED ARMOR TILE TRUNCATED DOME PANEL.
  - ⑥ CONSTRUCT NEW PCC PAVEMENT AROUND NEW IRRIGATION CONTROL BOXES. CONSTRUCT NEW 6" THICK PCC CURB WITH 2-#4 REBAR RUNNING THE LENGTH OF CURB. NEW CURB TO BE 4" HIGHER THAN SURFACE ELEVATION OF NEW PEDESTRIAN SIDEWALK. INSTALL SKATE STOPS ON CURB TOP EDGE FACING PEDESTRIAN SIDEWALK.
  - ⑦ APPLY NEW ASPHALT SEAL COAT OVER IMPACTED PARKING STALLS
  - ⑧ APPLY NEW PARKING STALLS AND ADA PARKING STALL WITH NEW WHEEL STOP PER SDRSD M-27A, SINGLE STALL WITH 9'-0" VAN ACCESSIBLE ACCESS ISLE. INSTALL NEW SIGNAGE PER SDRSD M-28 A & B AND PAVEMENT SYMBOL PER SDRSD M-29.
  - ⑨ GRADE 2:1 SLOPE FROM NEW SIDEWALK INTO LANDSCAPED AREA. INSTALL NEW SOD TO MATCH EXISTING ON SLOPE.
  - ⑩ INSTALL NEW SOD OVER CMU WALL BACKFILL TO COVER IMPACTED AREAS.
  - ⑪ CAP EXISTING SPRINKLER RISER BELOW GRADE ON INDICATED SPRINKLER HEADS.
  - ⑫ 3" THICK WOOD CHIP MULCH AS INDICATED.
  - ⑬ CONSTRUCT MONOLITHIC 6" THICK 12" HIGH CURB WITH 2 #3 HORIZONTAL REBAR FULL LENGTH OF CURB.

CIP NUMBER: **PK022**

Sheet <b>4</b>	<b>CITY OF POWAY</b> Department of Development Services	5 Sheets
<b>IMPROVEMENT PLANS FOR 2022-2023 CDBG ADA COMMUNITY PARK RESTROOM AND PATHWAY IMPROVEMENTS</b>		
California Coordinate Index		290-1755
City Engineer		05/24/2023
TRACY M BEACH	RCE 73756	DATE
Project Manager		05/15/2023
JEFF BEERS		DATE

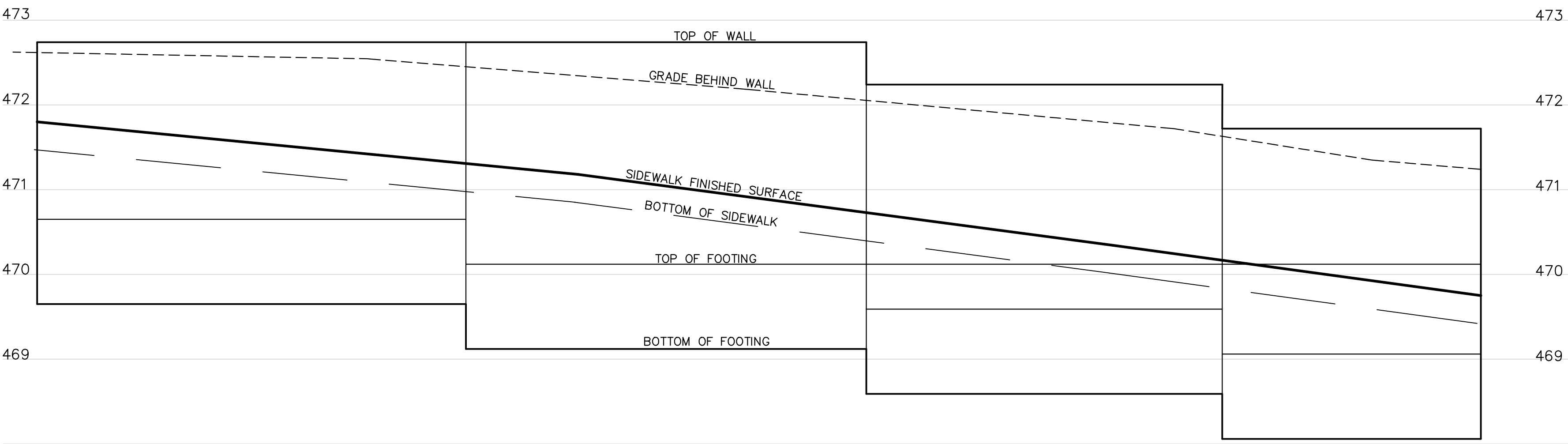


## RECORD PLAN

TRACY BEACH DATE  
P.E. #73756

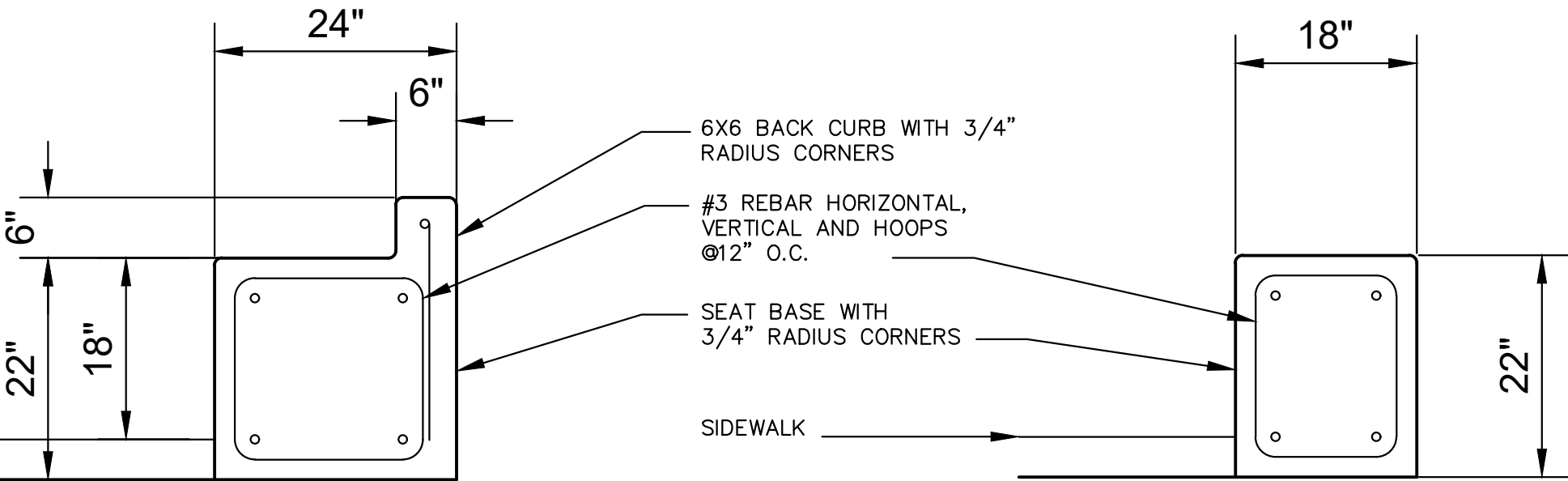
CITY APPROVED CHANGES				BENCH MARK	
No.	Description	Approved By	Approved Date	DESCRIPTION: _____	
				_____	
				LOCATION: _____	
				RECORDED FROM: _____	
				ELEVATION: _____	DATUM: _____





RETAINING WALL PROFILE

SCALE 1/4" = 1'-0"



SEAT WALL SECTIONS

SCALE 1/4" = 1'-0"



CITY APPROVED CHANGES				BENCH MARK	
No.	Description	Approved By	Approved Date	DESCRIPTION:	
				LOCATION:	
				RECORDED FROM:	
				ELEVATION:	DATUM:

CIP NUMBER: **PK022**

Sheet <b>5</b>	<b>CITY OF POWAY</b> Department of Development Services	<b>5</b> Sheets
<b>IMPROVEMENT PLANS FOR 2022-2023 CDBG ADA COMMUNITY PARK RESTROOM AND PATHWAY PATHWAY DETAILS</b> <small>California Coordinate Index 290-1755</small>		
City Engineer <i>TRACY M. BEACH</i>		05/24/2023
Project Manager <i>JEFF BEERS</i>		05/15/2023